

NOTES:

- DESIGNATION AREA TO BE REDUCED UPON COMPLETION OF WORKS.

LEGEND

- — — — MAIN TUNNEL
- - - - LINK SEWER
- - - - CSO COLLECTOR
- = = = = CONNECTION PIPELINE
- - - - VENTILATION DUCTS
- - - - EXISTING RETICULATION SEWER
- — — — EXISTING TRUNK SEWER
- - - - EXISTING STORMWATER
- - - - PROPOSED DESIGNATION BOUNDARY
- LID/STRUCTURE FLUSH WITH GROUND
- LID/STRUCTURE ABOVE GROUND

Plot Date: 10-Aug-12 9:38 AM
 File path: P:\0538 - Central Interceptor\04_Drawings\4.3_Working\AEE\AEE_Concent\General\DWG

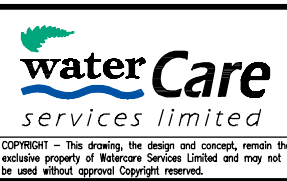
DESIGNED	NL				
DES. CHECKED	JS	<i>[Signature]</i>	08/12		
DRAWN	AP	<i>[Signature]</i>			
DWG. CHECKED	NL		08/12		
REV'D P.MGR	JS				
APP'D P.DIR	CC				
ISSUE	DATE	AMENDMENT	BY	APPD.	BY
A	17/08/12	CONSENT ISSUE	AP	PR	APP'D P.DIR

OPERATIONS

SITE LAYOUT AND DESIGNS INDICATIVE ONLY AND SUBJECT TO CHANGE DURING DETAILED DESIGN DEVELOPMENT

ASSET MANAGER

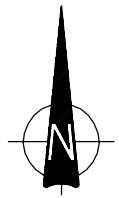
AEE AUGUST 2012



CENTRAL INTERCEPTOR GENERAL

MIRANDA RESERVE (L3S2) - PERMANENT WORKS PLAN

CAD FILE AEE-MAIN-16.1	DATE 26-Jul-12
ORIGINAL SCALE A1	CONTRACT No. 0538
1:500 A3	
DRAWING No. AEE-MAIN-16.1	ISSUE A



LEGEND	
	MAIN TUNNEL
	LINK SEWER
	CSO COLLECTOR
	CONNECTION PIPELINE
	VENTILATION DUCTS
	EXISTING RETICULATION SEWER
	EXISTING TRUNK SEWER
	EXISTING STORMWATER
	PROPOSED DESIGNATION BOUNDARY
	LID/STRUCTURE FLUSH WITH GROUND
	LID/STRUCTURE ABOVE GROUND
	PROPOSED NOISE BARRIER

Plot Date: 10-Aug-12 9:39 AM
 File path: P:\0538 - Central Interceptor\04_Drawings\4.3_Working\AEE\AEE_Concent\General\DWG

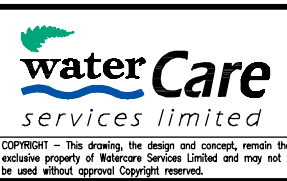
DESIGNED	NL				
DES. CHECKED	JS		08/12		
DRAWN	AP				
DWG. CHECKED	NL		08/12		
REV'D P.MGR	JS				
APP'D P.DIR	CC				
ISSUE	DATE	AMENDMENT	BY	APPD.	BY DATE
A	17/08/12	CONSENT ISSUE	AP	PR	APP'D P.DIR

OPERATIONS

SITE LAYOUT AND DESIGNS INDICATIVE ONLY AND SUBJECT TO CHANGE DURING DETAILED DESIGN DEVELOPMENT

ASSET MANAGER

AEE AUGUST 2012



CENTRAL INTERCEPTOR GENERAL

MIRANDA RESERVE (L3S2) - CONSTRUCTION WORKS PLAN

CAD FILE AEE-MAIN-16.2	DATE 26-Jul-12
ORIGINAL SCALE A1	CONTRACT No. 0538
1:500 A3	
DRAWING No. AEE-MAIN-16.2	ISSUE A

A08301A_209_L3S2_Miranda_Reserve_revC.dgn



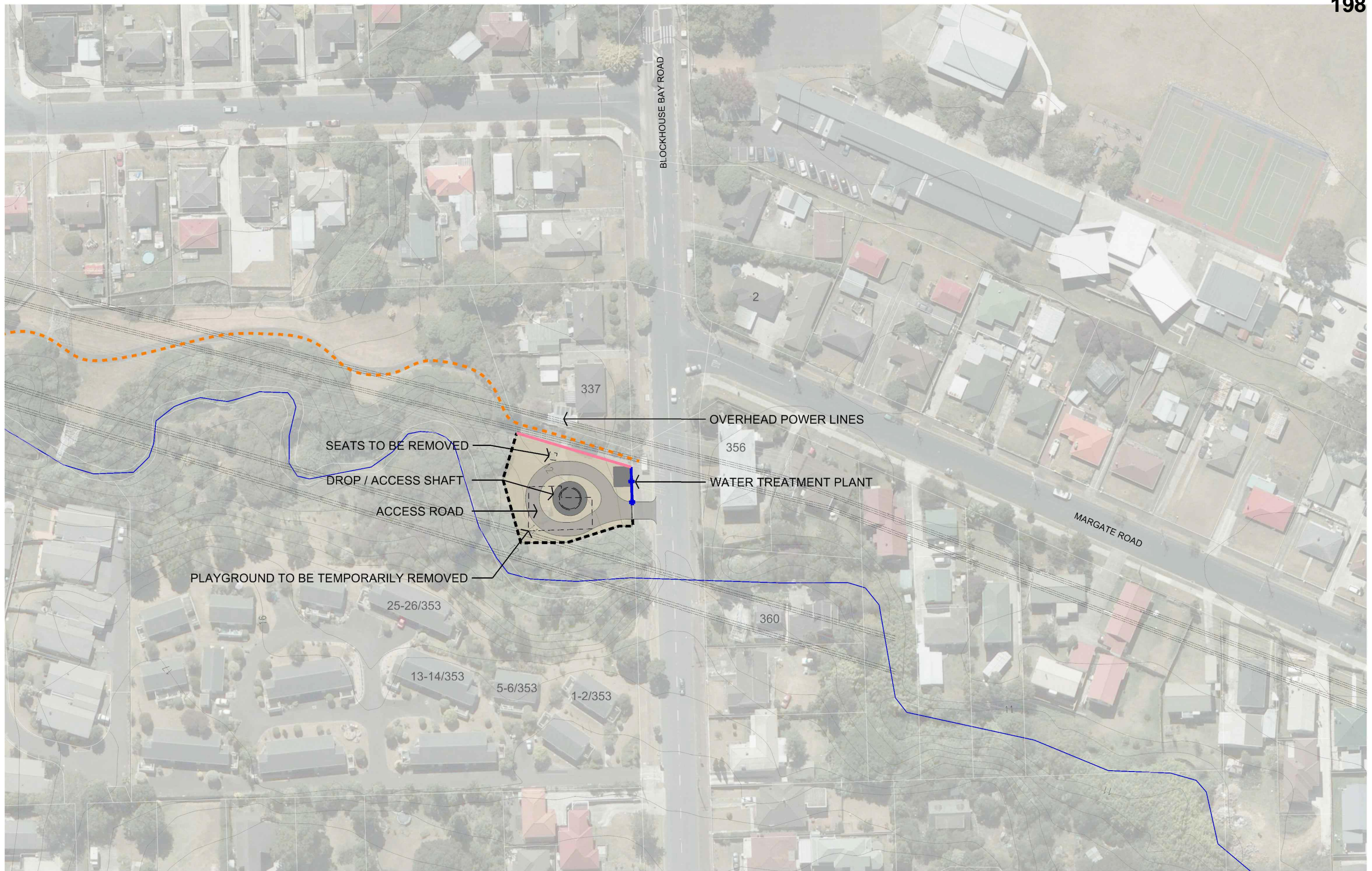


View from Blockhouse Bay Road looking North



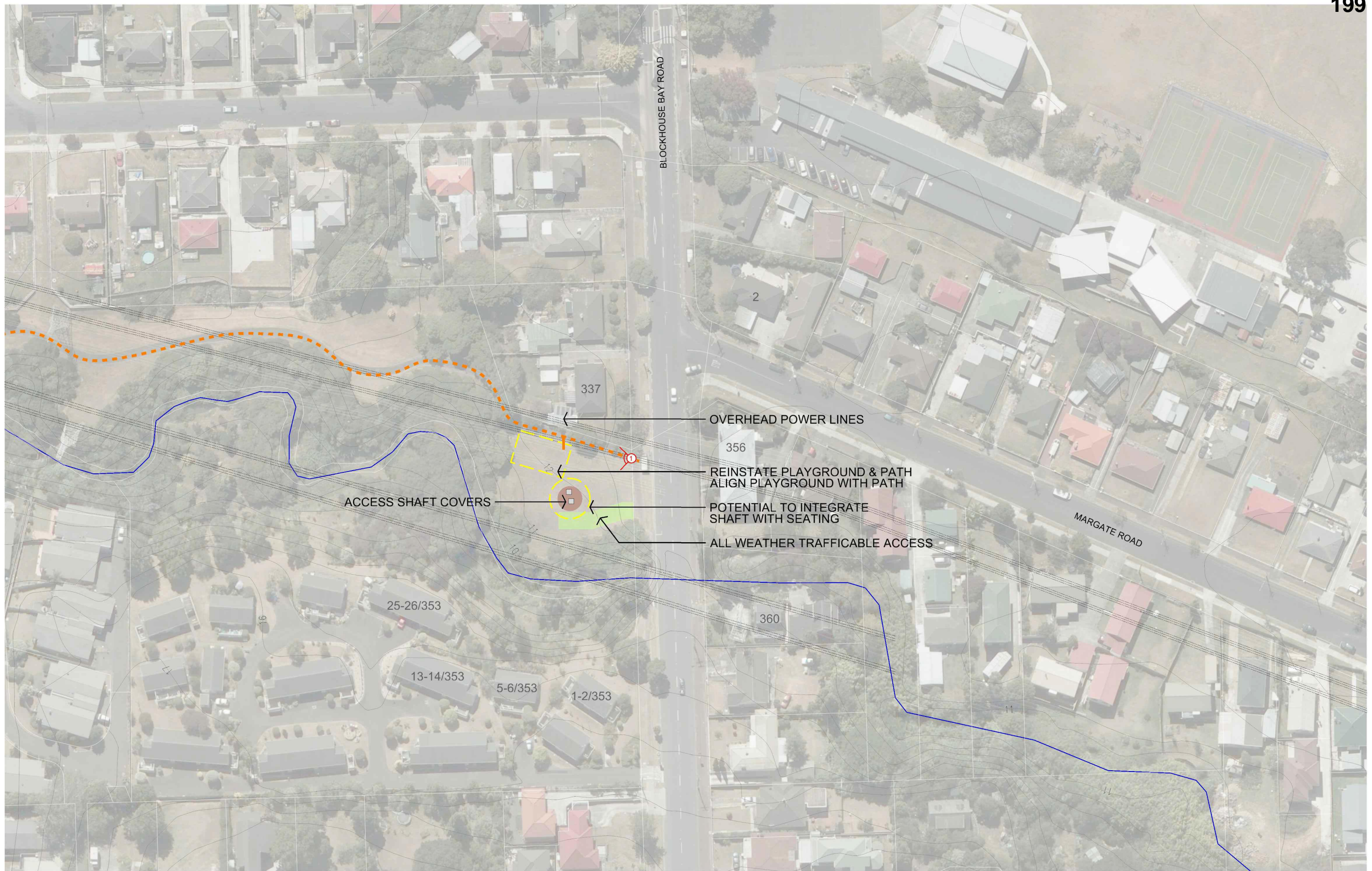
View from Northwest of proposed works area

A08301A_309_L3S2_Miranda_Reserve_revC.dgn



Note: Site layout indicative only. Final layout dependant on Construction Management Plan

A08301A_409_L3S2_Miranda_Reserve_revC.dgn



Note: Site layout indicative only. Final layout dependant on Site Reinstatement Plan

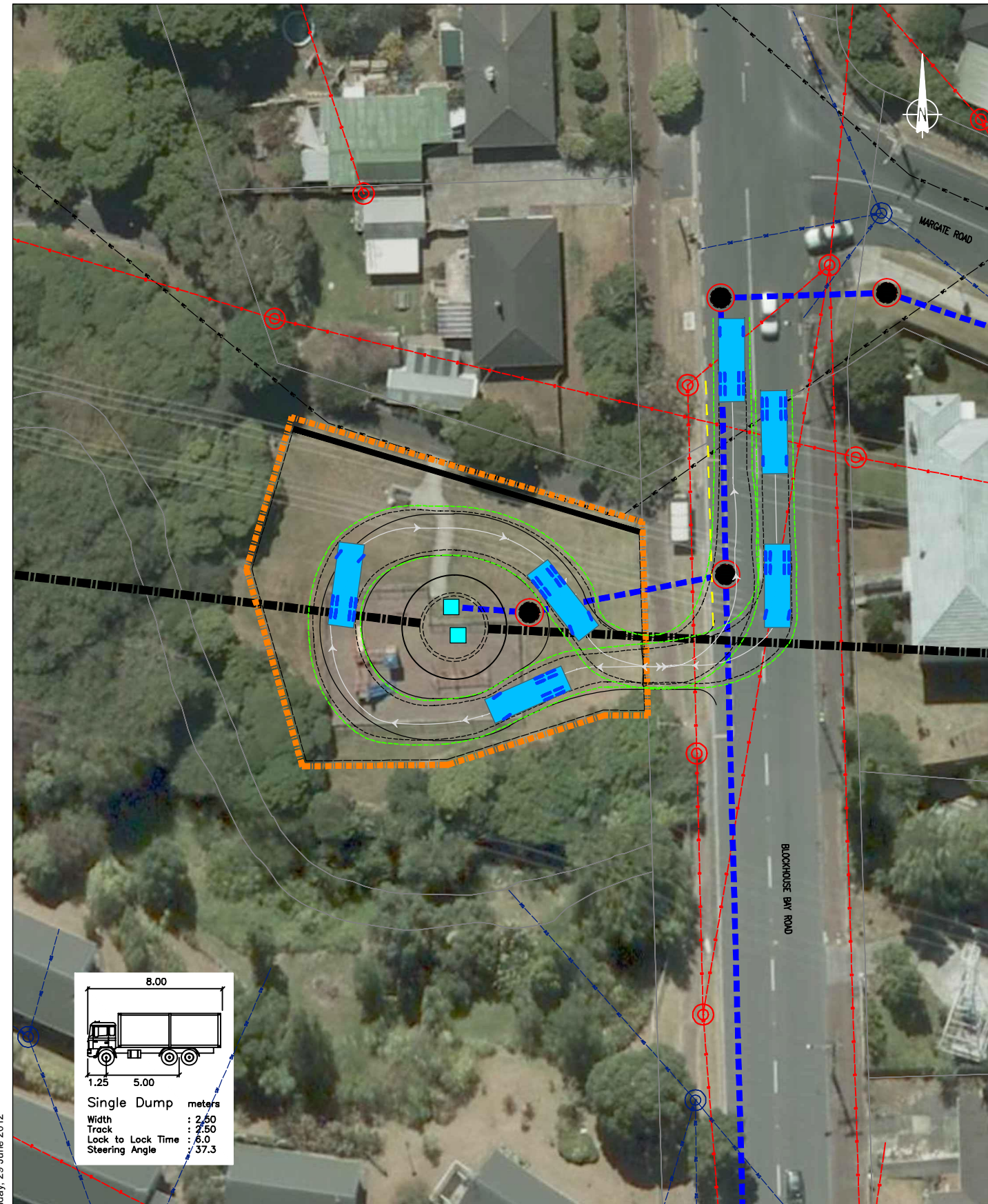
A08301A_509a_L352_Miranda_Reserve_revC.dgn



Existing View (from Blockhouse Bay Road)



Proposed View - Indicative



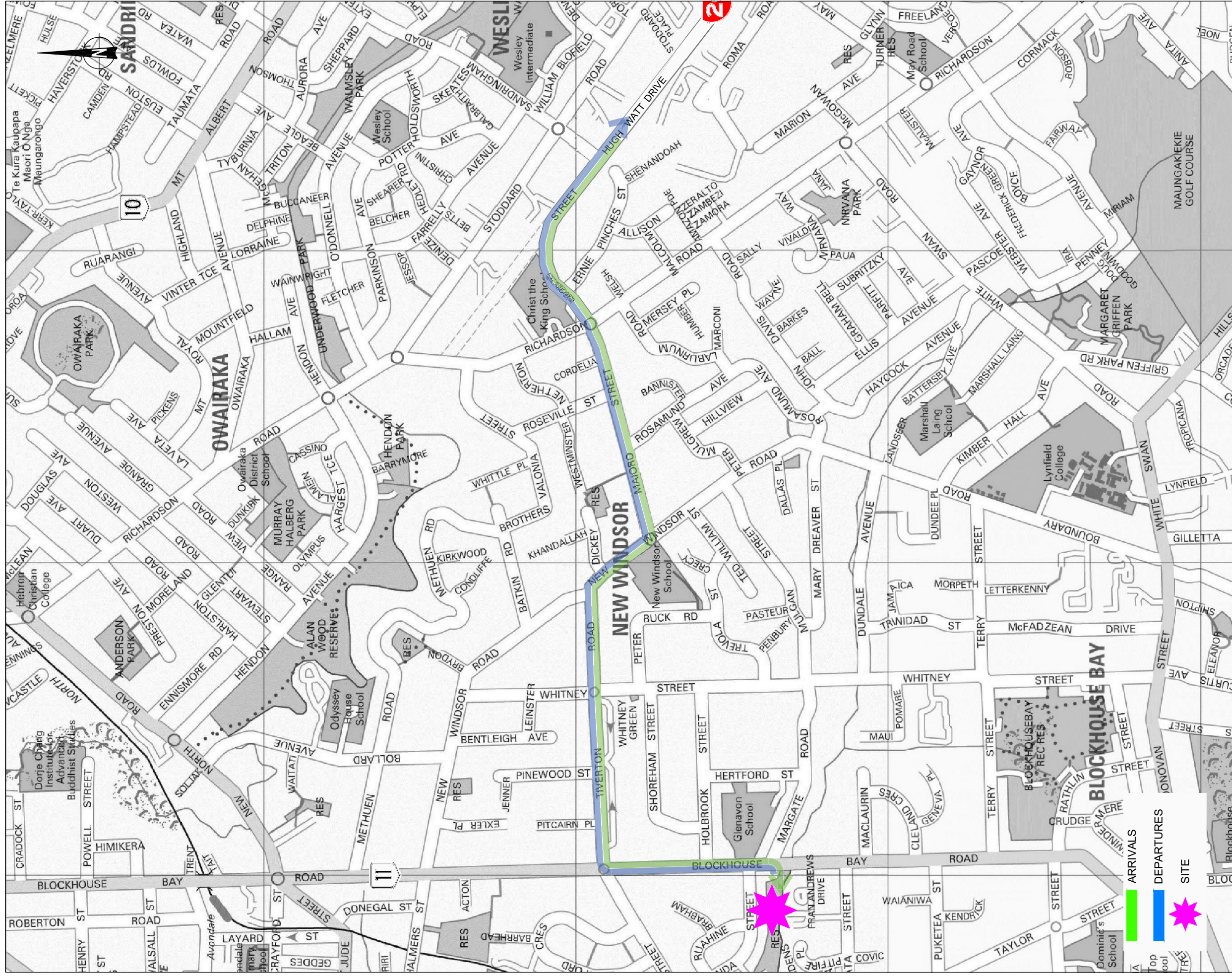
REVISION	DATE	DESCRIPTION
----	05.06.2012	Sourced from Watercare - AEE-MAIN-16.2.dwg

Watercare Central Interceptor
 Miranda Reserve (L3S2) - Truck Tracking



DRAWN: SP
 DATE: 29.06.2012
 SCALE: 1:500@A3
 DWG NO:11117A24B





Tuesday, 24 July 2012

Watercare - Miranda Reserve (L3S2)

Truck Routes

Traffic Design Group



32

SCALE: N.T.S